

| Activity Name   | Original Duration | Planned Start | Planned Finish | 2011 |    |    |    | 2012 |    |    |    | 2013 |    |    |    | 2014 |    |    |    | 2015 |    |    |    | 2016 |  |
|---|-------------------|---------------|----------------|------|----|----|----|------|----|----|----|------|----|----|----|------|----|----|----|------|----|----|----|------|--|
|   |                   |               |                | Q3   | Q4 | Q1 | Q2 | Q3   | Q4 | Q1 | Q2 | Q3   | Q4 | Q1 | Q2 | Q3   | Q4 | Q1 | Q2 | Q3   | Q4 | Q1 | Q2 |      |  |
| <b>HY/2009/15 - CWB TUNNEL (CBTS SECTION)</b>   |                   |               |                |      |    |    |    |      |    |    |    |      |    |    |    |      |    |    |    |      |    |    |    |      |  |
| <b>SUBMISSIONS COMPLYING WITH EPs</b>   |                   |               |                |      |    |    |    |      |    |    |    |      |    |    |    |      |    |    |    |      |    |    |    |      |  |
| EM&A Manual ( rely on the Master EP's submission EP-364/2009/A Condition 2.9)             |                   |               |                |      |    |    |    |      |    |    |    |      |    |    |    |      |    |    |    |      |    |    |    |      |  |
| Baseline Monitoring Report (rely on the Master EP's submission EP-364/2009 Condition 3.3) |                   |               |                |      |    |    |    |      |    |    |    |      |    |    |    |      |    |    |    |      |    |    |    |      |  |
| Monthly EM&A (rely on the masters EP's Submission, EP-364/2009/A Condition 3.4)           |                   |               |                |      |    |    |    |      |    |    |    |      |    |    |    |      |    |    |    |      |    |    |    |      |  |
| A dedicated website (rely on the master EP's submission, EP-364/2009/A Condition 4.2)     |                   |               |                |      |    |    |    |      |    |    |    |      |    |    |    |      |    |    |    |      |    |    |    |      |  |
| Management organization of main construction companies (FEP Condition 2.6)                | 1d                | 02-Oct-10     | 02-Oct-10      |      |    |    |    |      |    |    |    |      |    |    |    |      |    |    |    |      |    |    |    |      |  |
| Work Schedule (FEP Condition 2.7)   | 1d                | 27-Oct-10     | 27-Oct-10      |      |    |    |    |      |    |    |    |      |    |    |    |      |    |    |    |      |    |    |    |      |  |
| Location Plan (FEP Condition 2.8)   | 1d                | 27-Oct-10     | 27-Oct-10      |      |    |    |    |      |    |    |    |      |    |    |    |      |    |    |    |      |    |    |    |      |  |
| Noise Management plan (FEP Condition 2.9)   | 1d                | 27-Oct-10     | 27-Oct-10      |      |    |    |    |      |    |    |    |      |    |    |    |      |    |    |    |      |    |    |    |      |  |
| Landscape plan (FEP condition 2.10)   | 1d                | 31-Jan-11     | 31-Jan-11      |      |    |    |    |      |    |    |    |      |    |    |    |      |    |    |    |      |    |    |    |      |  |
| <b>EAST VENTILATION ADIT</b>  |                   |               |                |      |    |    |    |      |    |    |    |      |    |    |    |      |    |    |    |      |    |    |    |      |  |
| CCT @ Portion 1, 2, 4, 6, 22  | 1315d             | 27-Sep-10     | 03-May-14      |      |    |    |    |      |    |    |    |      |    |    |    |      |    |    |    |      |    |    |    |      |  |
| EV Adit @ Portion 4-Advance Works   | 526d              | 27-Sep-10     | 05-Mar-12      |      |    |    |    |      |    |    |    |      |    |    |    |      |    |    |    |      |    |    |    |      |  |
| EV Adit Portion 1, 2, 6, 22   | 26d               | 22-Dec-11     | 16-Jan-12      |      |    |    |    |      |    |    |    |      |    |    |    |      |    |    |    |      |    |    |    |      |  |
| EV Adit-based on Conforming Design  | 323d              | 15-Feb-12     | 02-Jan-13      |      |    |    |    |      |    |    |    |      |    |    |    |      |    |    |    |      |    |    |    |      |  |
| <b>TCBR1E (TS1 Area)</b>  |                   |               |                |      |    |    |    |      |    |    |    |      |    |    |    |      |    |    |    |      |    |    |    |      |  |
| Diaphragm Wall Construction (incl. SI, & tests after completion)                          | 107d              | 26-Apr-11     | 10-Aug-11      |      |    |    |    |      |    |    |    |      |    |    |    |      |    |    |    |      |    |    |    |      |  |
| Excavation & Lateral Support, ELS   | 99d               | 16-Jul-11     | 22-Oct-11      |      |    |    |    |      |    |    |    |      |    |    |    |      |    |    |    |      |    |    |    |      |  |
| Cut & Cover Tunnel Construction (incl. backfill)  | 78d               | 22-Oct-11     | 07-Jan-12      |      |    |    |    |      |    |    |    |      |    |    |    |      |    |    |    |      |    |    |    |      |  |
| OHVD and Cable Trough (access from Portion 22)  | 76d               | 18-Dec-13     | 03-Mar-14      |      |    |    |    |      |    |    |    |      |    |    |    |      |    |    |    |      |    |    |    |      |  |
| <b>TCBR2 + TCBR3 (TS2 Area)</b>   |                   |               |                |      |    |    |    |      |    |    |    |      |    |    |    |      |    |    |    |      |    |    |    |      |  |
| Diaphragm Wall Construction   | 118d              | 06-Jul-12     | 31-Oct-12      |      |    |    |    |      |    |    |    |      |    |    |    |      |    |    |    |      |    |    |    |      |  |
| Excavation & Lateral Support, ELS   | 248d              | 06-Jul-12     | 10-Mar-13      |      |    |    |    |      |    |    |    |      |    |    |    |      |    |    |    |      |    |    |    |      |  |
| Cut & Cover Tunnel Construction   | 164d              | 11-Mar-13     | 21-Aug-13      |      |    |    |    |      |    |    |    |      |    |    |    |      |    |    |    |      |    |    |    |      |  |
| OHVD Cable Trough (Access from Portion 22)  | 150d              | 05-Aug-13     | 01-Jan-14      |      |    |    |    |      |    |    |    |      |    |    |    |      |    |    |    |      |    |    |    |      |  |
| <b>TCBR1W (TS4 Area)</b>  |                   |               |                |      |    |    |    |      |    |    |    |      |    |    |    |      |    |    |    |      |    |    |    |      |  |
| Diaphragm Wall Construction   | 148d              | 28-Jun-11     | 22-Nov-11      |      |    |    |    |      |    |    |    |      |    |    |    |      |    |    |    |      |    |    |    |      |  |
| Excavation & Lateral Support, ELS   | 319d              | 26-Jun-11     | 11-May-12      |      |    |    |    |      |    |    |    |      |    |    |    |      |    |    |    |      |    |    |    |      |  |
| Landing Steps - Demolition/Reconstruct as footpath  | 40d               | 28-Jun-11     | 23-Aug-11      |      |    |    |    |      |    |    |    |      |    |    |    |      |    |    |    |      |    |    |    |      |  |

- ◆ Milestone
- ◆ Milestone
- ▨ Remaining Work
- ▨ Critical Remaining Work
- ▨ Actual Work

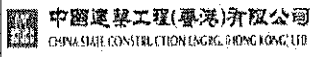
1 of 2

**China State Construction Engineering (Hong Kong) Ltd.**

**Contract No. HY/2009/15 - Central Wan Chai By Pass - Tunnel**

**( CBTS Section )**

| Prepared by William Caluza |                                    |         |          |
|----------------------------|------------------------------------|---------|----------|
| Date                       | Revision                           | Checked | Approved |
| 14-Mar-11                  | Revision C                         | ST      | KL       |
|                            | File: GC01a                        |         |          |
|                            | (Layout:HY/2009/15: CWB - Summary) |         |          |



| Activity Name   | Original Duration | Planned Start | Planned Finish | 2011 |    |    |    |    | 2012 |    |    |    | 2013 |    |    |    | 2014 |    |    |    | 2015 |    |    |    | 2016 |    |  |  |
|---|-------------------|---------------|----------------|------|----|----|----|----|------|----|----|----|------|----|----|----|------|----|----|----|------|----|----|----|------|----|--|--|
|   |                   |               |                | Q3   | Q4 | Q1 | Q2 | Q3 | Q4   | Q1 | Q2 | Q3 | Q4   | Q1 | Q2 | Q3 | Q4   | Q1 | Q2 | Q3 | Q4   | Q1 | Q2 | Q3 | Q4   | Q1 |  |  |
| Rock Excavation   | 235d              | 25-Apr-12     | 15-Dec-12      |      |    |    |    |    |      |    |    |    |      |    |    |    |      |    |    |    |      |    |    |    |      |    |  |  |
| ME4-Diaphragm Wall  | 114d              | 10-May-12     | 19-Oct-12      |      |    |    |    |    |      |    |    |    |      |    |    |    |      |    |    |    |      |    |    |    |      |    |  |  |
| AS Logistics Area for Mined Tunneling Works                 | 174d              | 01-Jun-12     | 07-Feb-13      |      |    |    |    |    |      |    |    |    |      |    |    |    |      |    |    |    |      |    |    |    |      |    |  |  |
| ME4-ELS Works   | 212d              | 01-Jun-12     | 02-Apr-13      |      |    |    |    |    |      |    |    |    |      |    |    |    |      |    |    |    |      |    |    |    |      |    |  |  |
| SCL Entrusted Works   | 291d              | 18-Jul-12     | 08-Sep-13      |      |    |    |    |    |      |    |    |    |      |    |    |    |      |    |    |    |      |    |    |    |      |    |  |  |
| Cut & Cover Tunnel Construction (w/o TS4 +)                 | 111d              | 17-Dec-12     | 06-Apr-13      |      |    |    |    |    |      |    |    |    |      |    |    |    |      |    |    |    |      |    |    |    |      |    |  |  |
| ME4-RC Structure  | 146d              | 28-Jan-13     | 21-Aug-13      |      |    |    |    |    |      |    |    |    |      |    |    |    |      |    |    |    |      |    |    |    |      |    |  |  |
| OHVD and Cable Trough (Access from TZ5/TPCWAE/TPCWAW)       | 180d              | 17-Jun-13     | 13-Dec-13      |      |    |    |    |    |      |    |    |    |      |    |    |    |      |    |    |    |      |    |    |    |      |    |  |  |
| <b>MINED TUNNEL</b>   |                   |               |                |      |    |    |    |    |      |    |    |    |      |    |    |    |      |    |    |    |      |    |    |    |      |    |  |  |
| CHT Protection Works @ location A, B, C                     | 342d              | 27-Sep-10     | 01-Feb-12      |      |    |    |    |    |      |    |    |    |      |    |    |    |      |    |    |    |      |    |    |    |      |    |  |  |
| Tunnel works from West Portal (access from TPCWAE& TZ5)     | 418d              | 12-Mar-12     | 30-Oct-13      |      |    |    |    |    |      |    |    |    |      |    |    |    |      |    |    |    |      |    |    |    |      |    |  |  |
| Tunnel Works from East Portal (Access from TS4 Area)        | 214d              | 30-Mar-12     | 01-Feb-13      |      |    |    |    |    |      |    |    |    |      |    |    |    |      |    |    |    |      |    |    |    |      |    |  |  |
| Tunnel OHVD & Cable Trough                                  | 384d              | 02-Dec-13     | 22-May-15      |      |    |    |    |    |      |    |    |    |      |    |    |    |      |    |    |    |      |    |    |    |      |    |  |  |
| <b>TPCWAE</b>   |                   |               |                |      |    |    |    |    |      |    |    |    |      |    |    |    |      |    |    |    |      |    |    |    |      |    |  |  |
| Drainage Diversion works along Hung Hing Road (Portion 19)  | 176d              | 15-Oct-10     | 24-Jun-11      |      |    |    |    |    |      |    |    |    |      |    |    |    |      |    |    |    |      |    |    |    |      |    |  |  |
| Diaphragm Wall Construction                                 | 147d              | 20-May-11     | 13-Oct-11      |      |    |    |    |    |      |    |    |    |      |    |    |    |      |    |    |    |      |    |    |    |      |    |  |  |
| Excavation & Lateral Support, ELS                           | 421d              | 20-May-11     | 13-Jul-12      |      |    |    |    |    |      |    |    |    |      |    |    |    |      |    |    |    |      |    |    |    |      |    |  |  |
| Rock Excavation   | 208d              | 12-Mar-12     | 03-Oct-12      |      |    |    |    |    |      |    |    |    |      |    |    |    |      |    |    |    |      |    |    |    |      |    |  |  |
| AS Logistics Area for Mined Tunneling works                 | 342d              | 12-May-12     | 18-Apr-13      |      |    |    |    |    |      |    |    |    |      |    |    |    |      |    |    |    |      |    |    |    |      |    |  |  |
| Cut & Cover Tunnel Construction                             | 130d              | 28-Jan-13     | 06-Jun-13      |      |    |    |    |    |      |    |    |    |      |    |    |    |      |    |    |    |      |    |    |    |      |    |  |  |
| OHVD and Cable Trough (Access from TZ5/TPCWAW)              | 182d              | 18-Feb-15     | 18-Aug-15      |      |    |    |    |    |      |    |    |    |      |    |    |    |      |    |    |    |      |    |    |    |      |    |  |  |
| <b>TPCWAW &amp; PORTION 11</b>                              |                   |               |                |      |    |    |    |    |      |    |    |    |      |    |    |    |      |    |    |    |      |    |    |    |      |    |  |  |
| Diaphragm Wall Construction + Portion 11                    | 222d              | 25-Oct-13     | 03-Jun-14      |      |    |    |    |    |      |    |    |    |      |    |    |    |      |    |    |    |      |    |    |    |      |    |  |  |
| Excavation & Lateral Support, ELS                           | 478d              | 25-Oct-13     | 14-Feb-15      |      |    |    |    |    |      |    |    |    |      |    |    |    |      |    |    |    |      |    |    |    |      |    |  |  |
| Cut & Cover Tunnel Construction                             | 143d              | 30-Dec-14     | 21-May-15      |      |    |    |    |    |      |    |    |    |      |    |    |    |      |    |    |    |      |    |    |    |      |    |  |  |
| OHVD and Cable Trough Installation (Access from Portion 11) | 235d              | 22-May-15     | 11-Jan-16      |      |    |    |    |    |      |    |    |    |      |    |    |    |      |    |    |    |      |    |    |    |      |    |  |  |

- ◆ ◆ Milestone
- ◆ ◆ Milestone
- ▬ Remaining Work
- ▬ Critical Remaining Work
- ▬ Actual Work

2 of 2

**China State Construction Engineering (Hong Kong) Ltd.**  
**Contract No. HY/2009/15 - Central Wan Chai By Pass - Tunnel**  
**( CBTS Section )**

| Prepared by William Caluza |                                     |         |          |
|----------------------------|-------------------------------------|---------|----------|
| Date                       | Revision                            | Checked | Approved |
| 14-Mar-11                  | Revision C                          | ST      | KL       |
|                            | File: 0001a                         |         |          |
|                            | (Layout: HY/2009/15: CWB - Summary) |         |          |
|                            |                                     |         |          |
|                            |                                     |         |          |



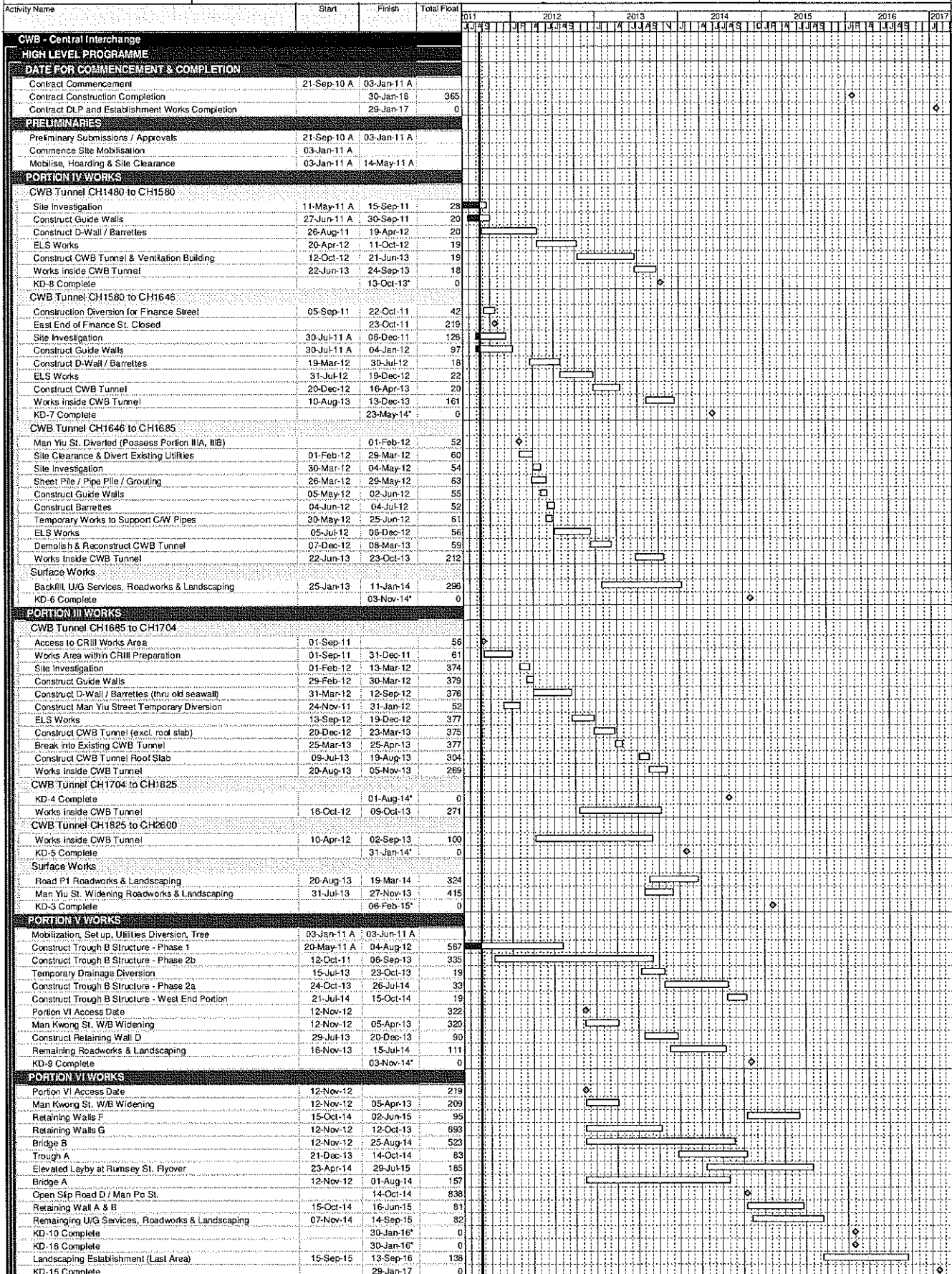




# HY/2009/18 Central - Wan Chai Bypass (Central Interchange)



TASK filter: HL

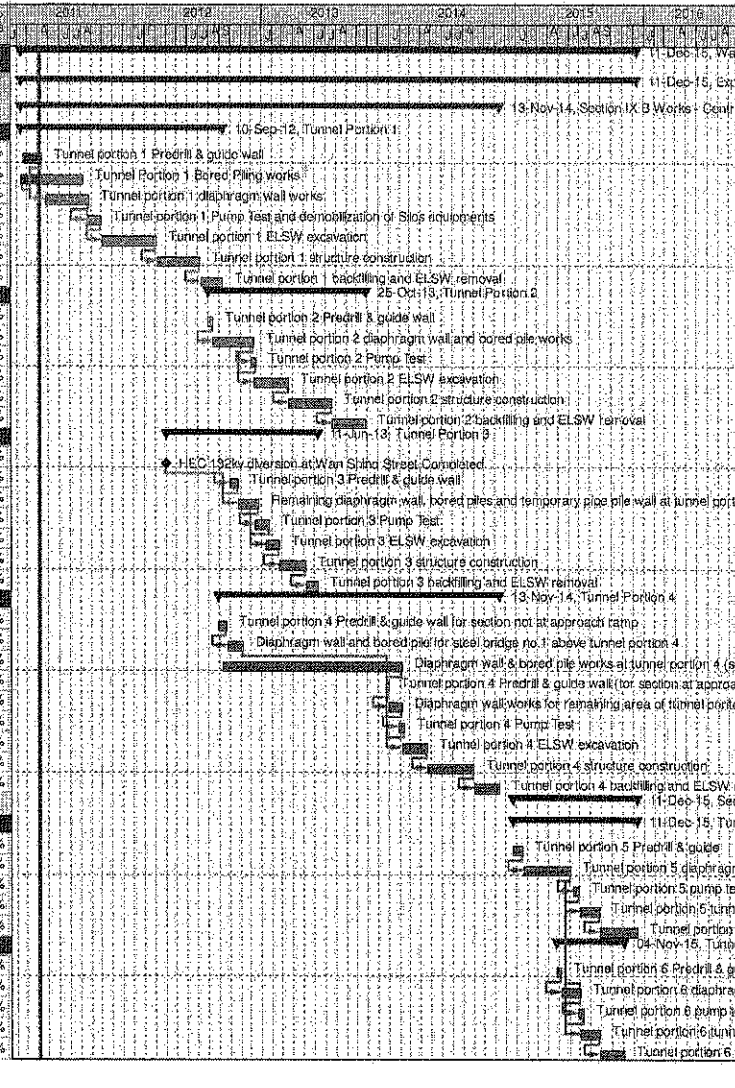




Wan Chai Development Phase II - Central - Wan Chai  
Bypass at Wan Chai East CONTRACT HK/2009/02

CHUN WO - CRGL JV

| Activity ID  | Activity Name  | OD  | Plan       | Finish    | %<br>Planned | 2011 | 2012 | 2013 | 2014 | 2015 | 2016 |
|--|--|-----|------------|-----------|--------------|------|------|------|------|------|------|
| <b>Wan Chai Development Phase II - Central - Wan Chai Bypass at Wan Chai East</b>                    |  |     |            |           |              |      |      |      |      |      |      |
| <b>Expanded and More Detailed Initial Works Programme</b>  |  |     |            |           |              |      |      |      |      |      |      |
| Section IX B Works - Central - Wan Chai Bypass Tunnel Structure from chainage 3400 to eastern tunnel |  |     |            |           |              |      |      |      |      |      |      |
| <b>Tunnel Portion 1</b>  |  |     |            |           |              |      |      |      |      |      |      |
| S9B-T1-0005  | Tunnel portion 1 Predrill & guide wall   | 10  | 18-Feb-11  | 13-Apr-11 | 40%          |      |      |      |      |      |      |
| S9B-T1-0007  | Tunnel Portion 1 Bored Piling works  | 105 | 09-Feb-11  | 08-Aug-11 | 0%           |      |      |      |      |      |      |
| S9B-T1-0010  | Tunnel portion 1 diaphragm wall works  | 105 | 26-Apr-11  | 27-Aug-11 | 0%           |      |      |      |      |      |      |
| S9B-T1-0015  | Tunnel portion 1 Pump Test and demobilization of Slos equipments                           | 35  | 20-Aug-11  | 30-Sep-11 | 0%           |      |      |      |      |      |      |
| S9B-T1-0020  | Tunnel portion 1 ELSW excavation   | 130 | 03-Oct-11  | 07-Mar-12 | 0%           |      |      |      |      |      |      |
| S9B-T1-0030  | Tunnel portion 1 structure construction  | 100 | 09-Mar-12  | 09-Jul-12 | 0%           |      |      |      |      |      |      |
| S9B-T1-0040  | Tunnel portion 1 backfilling and ELSW removal  | 54  | 10-Jul-12  | 10-Sep-12 | 0%           |      |      |      |      |      |      |
| <b>Tunnel Portion 2</b>  |  |     |            |           |              |      |      |      |      |      |      |
| S9B-T2-0105  | Tunnel portion 2 Predrill & guide wall   | 10  | 02-Aug-12  | 13-Aug-12 | 0%           |      |      |      |      |      |      |
| S9B-T2-0010  | Tunnel portion 2 diaphragm wall and bored pile works                                       | 100 | 14-Aug-12  | 10-Dec-12 | 0%           |      |      |      |      |      |      |
| S9B-T2-0015  | Tunnel portion 2 Pump Test   | 14  | 03-Dec-12  | 18-Dec-12 | 0%           |      |      |      |      |      |      |
| S9B-T2-0020  | Tunnel portion 2 ELSW excavation   | 80  | 11-Dec-12  | 19-Mar-13 | 0%           |      |      |      |      |      |      |
| S9B-T2-0030  | Tunnel portion 2 structure construction  | 100 | 20-Mar-13  | 22-Jul-13 | 0%           |      |      |      |      |      |      |
| S9B-T2-0040  | Tunnel portion 2 backfilling and ELSW removal  | 80  | 23-Jul-13  | 25-Oct-13 | 0%           |      |      |      |      |      |      |
| <b>Tunnel Portion 3</b>  |  |     |            |           |              |      |      |      |      |      |      |
| S9B-T3-0005  | HEC 132kv diversion at Wan Shing Street Completed  | 0   | 01-Apr-12* |           | 0%           |      |      |      |      |      |      |
| S9B-T3-0008  | Tunnel portion 3 Predrill & guide wall   | 20  | 02-Oct-12  | 25-Oct-12 | 0%           |      |      |      |      |      |      |
| S9B-T3-0010  | Remaining diaphragm wall, bored piles and temporary pipe pile wall at tunnel portion 3     | 50  | 25-Oct-12  | 22-Dec-12 | 0%           |      |      |      |      |      |      |
| S9B-T3-0015  | Tunnel portion 3 Pump Test   | 30  | 15-Dec-12  | 22-Jan-13 | 0%           |      |      |      |      |      |      |
| S9B-T3-0020  | Tunnel portion 3 ELSW excavation   | 30  | 15-Jan-13  | 20-Feb-13 | 0%           |      |      |      |      |      |      |
| S9B-T3-0030  | Tunnel portion 3 structure construction  | 80  | 21-Feb-13  | 08-May-13 | 0%           |      |      |      |      |      |      |
| S9B-T3-0040  | Tunnel portion 3 backfilling and ELSW removal  | 30  | 07-May-13  | 11-Jun-13 | 0%           |      |      |      |      |      |      |
| <b>Tunnel Portion 4</b>  |  |     |            |           |              |      |      |      |      |      |      |
| S9B-T4-0005  | Tunnel portion 4 Predrill & guide wall for section not at approach ramp                    | 21  | 30-Aug-12  | 22-Sep-12 | 0%           |      |      |      |      |      |      |
| S9B-T4-0010  | Diaphragm wall and bored pile for steel bridge no. 1 above tunnel portion 4                | 40  | 24-Sep-12  | 10-Nov-12 | 0%           |      |      |      |      |      |      |
| S9B-T4-0020  | Diaphragm wall & bored pile works at tunnel portion 4 (section not at approach ramp)       | 420 | 11-Sep-12  | 05-Feb-14 | 0%           |      |      |      |      |      |      |
| S9B-T4-0025  | Tunnel portion 4 Predrill & guide wall (for section at approach ramp)                      | 5   | 23-Dec-13  | 30-Dec-13 | 0%           |      |      |      |      |      |      |
| S9B-T4-0030  | Diaphragm wall works for remaining area of tunnel portion 4 (for section at approach ramp) | 30  | 31-Dec-13  | 06-Feb-14 | 0%           |      |      |      |      |      |      |
| S9B-T4-0035  | Tunnel portion 4 Pump Test   | 14  | 28-Jan-14  | 14-Feb-14 | 0%           |      |      |      |      |      |      |
| S9B-T4-0040  | Tunnel portion 4 ELSW excavation   | 60  | 07-Feb-14  | 19-Apr-14 | 0%           |      |      |      |      |      |      |
| S9B-T4-0050  | Tunnel portion 4 structure construction  | 110 | 22-Apr-14  | 01-Sep-14 | 0%           |      |      |      |      |      |      |
| S9B-T4-0060  | Tunnel portion 4 backfilling and ELSW removal  | 60  | 02-Sep-14  | 13-Nov-14 | 0%           |      |      |      |      |      |      |
| Section X Works - Central - Wan Chai Bypass Tunnel Structure from western tunnel to chainage 3400    |  |     |            |           |              |      |      |      |      |      |      |
| <b>Tunnel Portion 5</b>  |  |     |            |           |              |      |      |      |      |      |      |
| S10-T5-0005  | Tunnel portion 5 Predrill & guide  | 21  | 23-Dec-14  | 19-Jan-15 | 0%           |      |      |      |      |      |      |
| S10-T5-0010  | Tunnel portion 5 diaphragm wall & bored pile works   | 110 | 20-Jan-15  | 04-Jun-15 | 0%           |      |      |      |      |      |      |
| S10-T5-0015  | Tunnel portion 5 pump test   | 14  | 13-Jun-15  | 30-Jun-15 | 0%           |      |      |      |      |      |      |
| S10-T5-0020  | Tunnel portion 5 tunnel ELSW excavation  | 45  | 04-Jul-15  | 25-Aug-15 | 0%           |      |      |      |      |      |      |
| S10-T5-0030  | Tunnel portion 5 tunnel structure construction   | 90  | 26-Aug-15  | 11-Dec-15 | 0%           |      |      |      |      |      |      |
| <b>Tunnel Portion 6</b>  |  |     |            |           |              |      |      |      |      |      |      |
| S10-T6-0040  | Tunnel portion 6 Predrill & guide  | 12  | 24-Apr-15  | 08-May-15 | 0%           |      |      |      |      |      |      |
| S10-T6-0050  | Tunnel portion 6 diaphragm wall & bored pile works at Area 10                              | 45  | 09-May-15  | 09-Jul-15 | 0%           |      |      |      |      |      |      |
| S10-T6-0055  | Tunnel portion 6 pump test   | 14  | 25-Jun-15  | 11-Jul-15 | 0%           |      |      |      |      |      |      |
| S10-T6-0060  | Tunnel portion 6 tunnel ELSW excavation at Area 10   | 45  | 04-Jul-15  | 25-Aug-15 | 0%           |      |      |      |      |      |      |
| S10-T6-0070  | Tunnel portion 6 tunnel structure construction at Area 10                                  | 58  | 26-Aug-15  | 04-Nov-15 | 0%           |      |      |      |      |      |      |



CEDD CONTRACT NO. HK/2009/02  
**Wan Chai Development Phase II - Central Wan Chai Bypass at Wan Chai East (Contract 2)**  
 Revised Programme dated 7 April 2011

| Date      | Revision | Checked | Approved |
|-----------|----------|---------|----------|
| 07-Apr-11 |          | KT      | KY       |

Page 10 of 11

| Activity ID  | Activity Name  | Rem Dur | Start       | Finish    | 2012    |    |    |    |    |          |    |    |    |       |    |    |    |       |    |    |    |  |  |
|--|--|---------|-------------|-----------|---------|----|----|----|----|----------|----|----|----|-------|----|----|----|-------|----|----|----|--|--|
|  |  |         |             |           | January |    |    |    |    | February |    |    |    | March |    |    |    | April |    |    |    |  |  |
|  |  |         |             |           | 26      | 02 | 09 | 16 | 23 | 30       | 06 | 13 | 20 | 27    | 05 | 12 | 19 | 26    | 02 | 09 | 16 |  |  |
| <b>3MRP - Jan 2012 to Apr 2012</b>                       |  |         |             |           |         |    |    |    |    |          |    |    |    |       |    |    |    |       |    |    |    |  |  |
| <b>01 - CONTRACT DATES</b>                               |  |         |             |           |         |    |    |    |    |          |    |    |    |       |    |    |    |       |    |    |    |  |  |
| <b>01.1 - Conditions</b>                                 |  |         |             |           |         |    |    |    |    |          |    |    |    |       |    |    |    |       |    |    |    |  |  |
| 0110-1100  | PMI for Section 1 of the Works                                   | 0       |             | 21-Jan-12 |         |    |    |    |    |          |    |    |    |       |    |    |    |       |    |    |    |  |  |
| <b>01.2 - Possession of Site</b>                         |  |         |             |           |         |    |    |    |    |          |    |    |    |       |    |    |    |       |    |    |    |  |  |
| 0120-2000  | Possession to Portion X  | 0       | 21-Jan-12*  |           |         |    |    |    |    |          |    |    |    |       |    |    |    |       |    |    |    |  |  |
| 0120-2100  | Possession to Portion III (Partial Possession)                   | 0       | 31-Dec-11 A |           |         |    |    |    |    |          |    |    |    |       |    |    |    |       |    |    |    |  |  |
| 0120-2200  | Possession to Portion VA (Partial Possession)                    | 0       | 31-Dec-11 A |           |         |    |    |    |    |          |    |    |    |       |    |    |    |       |    |    |    |  |  |
| 0120-2300  | Possession to Portion VB (Partial Possession)                    | 0       | 31-Dec-11 A |           |         |    |    |    |    |          |    |    |    |       |    |    |    |       |    |    |    |  |  |
| 0120-2400  | Possession to Portion VC (Partial Possession)                    | 0       | 31-Dec-11 A |           |         |    |    |    |    |          |    |    |    |       |    |    |    |       |    |    |    |  |  |
| 0120-2500  | Possession to Portion VD (Partial Possession)                    | 0       | 31-Dec-11 A |           |         |    |    |    |    |          |    |    |    |       |    |    |    |       |    |    |    |  |  |
| <b>01.5 - Period of Site Possession for each Portion</b> |  |         |             |           |         |    |    |    |    |          |    |    |    |       |    |    |    |       |    |    |    |  |  |
| 0150-1000  | Site possession Period Portion VI                                | 2070    | 20-Jan-11 A | 20-Sep-17 |         |    |    |    |    |          |    |    |    |       |    |    |    |       |    |    |    |  |  |
| 0150-1100  | Site possession Period Portion VIIA                              | 2070    | 04-Aug-11 A | 20-Sep-17 |         |    |    |    |    |          |    |    |    |       |    |    |    |       |    |    |    |  |  |
| 0150-1200  | Site possession Period Portion VIIB                              | 862     | 04-Aug-11 A | 31-May-14 |         |    |    |    |    |          |    |    |    |       |    |    |    |       |    |    |    |  |  |
| 0150-1300  | Site possession Period Portion VIIC                              | 1208    | 04-Aug-11 A | 12-May-15 |         |    |    |    |    |          |    |    |    |       |    |    |    |       |    |    |    |  |  |
| 0150-1400  | Site possession Period Portion VIID                              | 862     | 04-Aug-11 A | 31-May-14 |         |    |    |    |    |          |    |    |    |       |    |    |    |       |    |    |    |  |  |
| 0150-1500  | Site possession Period Portion XI                                | 622     | 05-Oct-11 A | 04-Oct-13 |         |    |    |    |    |          |    |    |    |       |    |    |    |       |    |    |    |  |  |
| 0150-2000  | Site possession Period Portion X                                 | 2070    | 21-Jan-12   | 20-Sep-17 |         |    |    |    |    |          |    |    |    |       |    |    |    |       |    |    |    |  |  |
| 0150-2500  | Site possession Period Portion VD                                | 1293    | 31-Dec-11 A | 05-Aug-15 |         |    |    |    |    |          |    |    |    |       |    |    |    |       |    |    |    |  |  |
| <b>02 - PRE-CONSTRUCTION WORKS</b>                       |  |         |             |           |         |    |    |    |    |          |    |    |    |       |    |    |    |       |    |    |    |  |  |
| <b>02.2 - Contractor's Submission</b>                    |  |         |             |           |         |    |    |    |    |          |    |    |    |       |    |    |    |       |    |    |    |  |  |
| 0220-1200  | Temp. Drainage Management Plan - Approval from ER                | 7       | 10-Sep-11 A | 27-Jan-12 |         |    |    |    |    |          |    |    |    |       |    |    |    |       |    |    |    |  |  |
| 0220-1250  | Concrete Ready Mix/Design Mix - Concrete Plant Trials & Approval | 8       | 04-Aug-11 A | 28-Jan-12 |         |    |    |    |    |          |    |    |    |       |    |    |    |       |    |    |    |  |  |
| 0220-1260  | Drainage Pipes & Materials - Submission                          | 14      | 15-Sep-11 A | 03-Feb-12 |         |    |    |    |    |          |    |    |    |       |    |    |    |       |    |    |    |  |  |
| 0220-1270  | Drainage Pipes & Materials - ER Review/Comment                   | 14      | 04-Feb-12   | 17-Feb-12 |         |    |    |    |    |          |    |    |    |       |    |    |    |       |    |    |    |  |  |
| 0220-1280  | Drainage Pipes & Materials - Resubmission                        | 7       | 18-Feb-12   | 24-Feb-12 |         |    |    |    |    |          |    |    |    |       |    |    |    |       |    |    |    |  |  |
| 0220-1290  | Drainage Pipes & Materials - ER Approval                         | 14      | 25-Feb-12   | 09-Mar-12 |         |    |    |    |    |          |    |    |    |       |    |    |    |       |    |    |    |  |  |
| 0220-1300  | Drainage Pipes & Materials - Procurement & Delivery              | 14      | 03-Mar-12   | 16-Mar-12 |         |    |    |    |    |          |    |    |    |       |    |    |    |       |    |    |    |  |  |
| 0220-1360  | Tunnel Structures Materials - Submission                         | 28      | 15-Mar-12   | 11-Apr-12 |         |    |    |    |    |          |    |    |    |       |    |    |    |       |    |    |    |  |  |
| 0220-1370  | Tunnel Structures Materials - ER Review/Comment                  | 28      | 12-Apr-12   | 09-May-12 |         |    |    |    |    |          |    |    |    |       |    |    |    |       |    |    |    |  |  |
| 0220-1460  | Bridge Bearing - Submission                                      | 15      | 10-Oct-11 A | 04-Feb-12 |         |    |    |    |    |          |    |    |    |       |    |    |    |       |    |    |    |  |  |
| 0220-1470  | Bridge Bearing - ER Review/Comment                               | 28      | 05-Feb-12   | 03-Mar-12 |         |    |    |    |    |          |    |    |    |       |    |    |    |       |    |    |    |  |  |
| 0220-1480  | Bridge Bearing - Resubmission                                    | 14      | 04-Mar-12   | 17-Mar-12 |         |    |    |    |    |          |    |    |    |       |    |    |    |       |    |    |    |  |  |
| 0220-1490  | Bridge Bearing - ER Approval                                     | 28      | 18-Mar-12   | 14-Apr-12 |         |    |    |    |    |          |    |    |    |       |    |    |    |       |    |    |    |  |  |
| <b>02.3 - Method Statement / Shop Drawings</b>           |  |         |             |           |         |    |    |    |    |          |    |    |    |       |    |    |    |       |    |    |    |  |  |
| 0230-1131  | MS Marine Piling - Submission (low headroom)                     | 28      | 13-Feb-12   | 11-Mar-12 |         |    |    |    |    |          |    |    |    |       |    |    |    |       |    |    |    |  |  |
| 0230-1132  | MS Marine Piling - ER Review & Comment (low headroom)            | 28      | 12-Mar-12   | 08-Apr-12 |         |    |    |    |    |          |    |    |    |       |    |    |    |       |    |    |    |  |  |
| 0230-1133  | MS Marine Piling - Resubmission (low headroom)                   | 28      | 09-Apr-12   | 06-May-12 |         |    |    |    |    |          |    |    |    |       |    |    |    |       |    |    |    |  |  |
| 0230-1260  | MS Cut & Cover Tunnel - Submission                               | 28      | 21-Jan-12   | 17-Feb-12 |         |    |    |    |    |          |    |    |    |       |    |    |    |       |    |    |    |  |  |
| 0230-1270  | MS Cut & Cover Tunnel - ER Review & Comment                      | 28      | 18-Feb-12   | 16-Mar-12 |         |    |    |    |    |          |    |    |    |       |    |    |    |       |    |    |    |  |  |
| 0230-1280  | MS Cut & Cover Tunnel - Resubmission                             | 28      | 17-Mar-12   | 13-Apr-12 |         |    |    |    |    |          |    |    |    |       |    |    |    |       |    |    |    |  |  |
| 0230-1340  | MS Pre-cast Segment Bridge - Submission                          | 28      | 01-Apr-12   | 28-Apr-12 |         |    |    |    |    |          |    |    |    |       |    |    |    |       |    |    |    |  |  |
| 0230-1460  | MS Stressing/Destressing Tendons - Submission                    | 28      | 01-Mar-12   | 28-Mar-12 |         |    |    |    |    |          |    |    |    |       |    |    |    |       |    |    |    |  |  |

|  |                           |
|--|---------------------------|
|  | Remaining Level of Effort |
|  | Actual Level of Effort    |
|  | Actual Work               |
|  | Remaining Work            |
|  | Critical Remaining Work   |
|  | Milestone                 |

**Contract HY/2009/19**  
**Three Month Rolling Programme (21 JAN 2012 - 20 APR 2012)**





| Activity ID                         | Activity Name  | Rem Dur | Start       | Finish      | 2012   |    |    |    |          |    |    |    |       |    |    |    |       |    |    |    |
|-------------------------------------|--|---------|-------------|-------------|--|----|----|----|----------|----|----|----|-------|----|----|----|-------|----|----|----|
|                                     |  |         |             |             | January  |    |    |    | February |    |    |    | March |    |    |    | April |    |    |    |
|                                     |  |         |             |             | 25   | 02 | 09 | 16 | 23       | 30 | 06 | 13 | 20    | 27 | 05 | 12 | 19    | 26 | 02 | 09 |
| <b>05.2.1 - D-Wall Construction</b> |  |         |             |             |  |    |    |    |          |    |    |    |       |    |    |    |       |    |    |    |
| 0521-1667                           | Construction of Temporary Loading Ramp at Portion VIIA         | 14      | 05-Dec-11 A | 10-Feb-12   | Construction of Temporary Loading Ramp at Portion VIIA         |    |    |    |          |    |    |    |       |    |    |    |       |    |    |    |
| 0521-1710.05                        | D-wall Panel N106 (6m - 441cu.m)                               | 10      | 23-Mar-12   | 03-Apr-12   | D-wall Panel N106 (6m - 441cu.m)                               |    |    |    |          |    |    |    |       |    |    |    |       |    |    |    |
| 0521-1710.10                        | D-wall Panel N105 (4.8m - 354cu.m)                             | 10      | 29-Feb-12   | 10-Mar-12   | D-wall Panel N105 (4.8m - 354cu.m)                             |    |    |    |          |    |    |    |       |    |    |    |       |    |    |    |
| 0521-1710.15                        | D-wall Panel N104 (3.4m - 257cu.m)                             | 10      | 11-Feb-12   | 22-Feb-12   | D-wall Panel N104 (3.4m - 257cu.m)                             |    |    |    |          |    |    |    |       |    |    |    |       |    |    |    |
| 0521-1710.20                        | D-wall Panel N103 (3.4m - 256cu.m)                             | 10      | 21-Jan-12   | 04-Feb-12   | D-wall Panel N103 (3.4m - 256cu.m)                             |    |    |    |          |    |    |    |       |    |    |    |       |    |    |    |
| 0521-1710.30                        | D-wall Panel N102 (6m - 452cu.m)                               | 0       | 21-Dec-11 A | 05-Jan-12 A | D-wall Panel N102 (6m - 452cu.m)                               |    |    |    |          |    |    |    |       |    |    |    |       |    |    |    |
| 0521-1710.35                        | D-wall Panel N100 (6m - 456cu.m)                               | 10      | 12-Mar-12   | 22-Mar-12   | D-wall Panel N100 (6m - 456cu.m)                               |    |    |    |          |    |    |    |       |    |    |    |       |    |    |    |
| 0521-1710.40                        | D-wall Panel N99 (6m - 459cu.m)                                | 12      | 31-Jan-12   | 13-Feb-12   | D-wall Panel N99 (6m - 459cu.m)                                |    |    |    |          |    |    |    |       |    |    |    |       |    |    |    |
| 0521-1710.45                        | D-wall Panel N98 (6m - 462cu.m)                                | 0       | 03-Dec-11 A | 28-Dec-11 A | D-wall Panel N98 (6m - 462cu.m)                                |    |    |    |          |    |    |    |       |    |    |    |       |    |    |    |
| 0521-1710.55                        | D-wall Panel N96 (6m - 488cu.m)                                | 6       | 03-Jan-12 A | 31-Jan-12   | D-wall Panel N96 (6m - 488cu.m)                                |    |    |    |          |    |    |    |       |    |    |    |       |    |    |    |
| 0521-1710.60                        | D-wall Panel N95 (6m - 492cu.m)                                | 10      | 06-Feb-12   | 16-Feb-12   | D-wall Panel N95 (6m - 492cu.m)                                |    |    |    |          |    |    |    |       |    |    |    |       |    |    |    |
| 0521-1750.05                        | D-wall Panel N94 (6m - 497cu.m)                                | 10      | 23-Feb-12   | 05-Mar-12   | D-wall Panel N94 (6m - 497cu.m)                                |    |    |    |          |    |    |    |       |    |    |    |       |    |    |    |
| 0521-1750.10                        | D-wall Panel N93 (6m - 501cu.m)                                | 10      | 17-Mar-12   | 28-Mar-12   | D-wall Panel N93 (6m - 501cu.m)                                |    |    |    |          |    |    |    |       |    |    |    |       |    |    |    |
| 0521-1750.15                        | D-wall Panel N92 (6m - 503cu.m)                                | 10      | 06-Mar-12   | 16-Mar-12   | D-wall Panel N92 (6m - 503cu.m)                                |    |    |    |          |    |    |    |       |    |    |    |       |    |    |    |
| 0521-1750.20                        | D-wall Panel N91 (6m - 472cu.m)                                | 10      | 17-Feb-12   | 28-Feb-12   | D-wall Panel N91 (6m - 472cu.m)                                |    |    |    |          |    |    |    |       |    |    |    |       |    |    |    |
| 0521-1750.25                        | D-wall Panel N90 (4.16m - 349cu.m)                             | 0       | 01-Dec-11 A | 30-Dec-11 A | D-wall Panel N90 (4.16m - 349cu.m)                             |    |    |    |          |    |    |    |       |    |    |    |       |    |    |    |
| 0521-1750.30                        | D-wall Panel N89 (4.16m - 349cu.m)                             | 0       | 03-Nov-11 A | 28-Dec-11 A | D-wall Panel N89 (4.16m - 349cu.m)                             |    |    |    |          |    |    |    |       |    |    |    |       |    |    |    |
| 0521-1750.35                        | D-wall Panel N88 (6m - 505cu.m)                                | 0       | 19-Dec-11 A | 13-Jan-12 A | D-wall Panel N88 (6m - 505cu.m)                                |    |    |    |          |    |    |    |       |    |    |    |       |    |    |    |
| 0521-1750.40                        | D-wall Panel N87 (6m - 506cu.m)                                | 10      | 06-Mar-12   | 16-Mar-12   | D-wall Panel N87 (6m - 506cu.m)                                |    |    |    |          |    |    |    |       |    |    |    |       |    |    |    |
| 0521-1750.45                        | D-wall Panel N86 (6m - 507cu.m)                                | 10      | 29-Feb-12   | 10-Mar-12   | D-wall Panel N86 (6m - 507cu.m)                                |    |    |    |          |    |    |    |       |    |    |    |       |    |    |    |
| 0521-1750.50                        | D-wall Panel N85 (6m - 507cu.m)                                | 10      | 17-Feb-12   | 28-Feb-12   | D-wall Panel N85 (6m - 507cu.m)                                |    |    |    |          |    |    |    |       |    |    |    |       |    |    |    |
| 0521-1750.55                        | D-wall Panel N84 (6m - 511cu.m)                                | 5       | 11-Jan-12 A | 30-Jan-12   | D-wall Panel N84 (6m - 511cu.m)                                |    |    |    |          |    |    |    |       |    |    |    |       |    |    |    |
| 0521-1750.60                        | D-wall Panel N83 (6m - 517cu.m)                                | 0       | 15-Dec-11 A | 09-Jan-12 A | D-wall Panel N83 (6m - 517cu.m)                                |    |    |    |          |    |    |    |       |    |    |    |       |    |    |    |
| 0521-1790.10                        | D-wall Panel N74 (6m - 562cu.m)                                | 10      | 12-Mar-12   | 22-Mar-12   | D-wall Panel N74 (6m - 562cu.m)                                |    |    |    |          |    |    |    |       |    |    |    |       |    |    |    |
| 0521-1790.15                        | D-wall Panel N75 (6m - 554cu.m)                                | 10      | 23-Feb-12   | 05-Mar-12   | D-wall Panel N75 (6m - 554cu.m)                                |    |    |    |          |    |    |    |       |    |    |    |       |    |    |    |
| 0521-1790.20                        | D-wall Panel N76 (6m - 585cu.m)                                | 10      | 11-Feb-12   | 22-Feb-12   | D-wall Panel N76 (6m - 585cu.m)                                |    |    |    |          |    |    |    |       |    |    |    |       |    |    |    |
| 0521-1795.10                        | D-wall Panel N77 (6m - 570cu.m)                                | 10      | 31-Jan-12   | 10-Feb-12   | D-wall Panel N77 (6m - 570cu.m)                                |    |    |    |          |    |    |    |       |    |    |    |       |    |    |    |
| 0521-1795.15                        | D-wall Panel N78 (6m - 554cu.m)                                | 5       | 09-Jan-12 A | 30-Jan-12   | D-wall Panel N78 (6m - 554cu.m)                                |    |    |    |          |    |    |    |       |    |    |    |       |    |    |    |
| 0521-1795.25                        | D-wall Panel N80 (6m - 537cu.m)                                | 10      | 06-Feb-12   | 16-Feb-12   | D-wall Panel N80 (6m - 537cu.m)                                |    |    |    |          |    |    |    |       |    |    |    |       |    |    |    |
| 0521-1795.30                        | D-wall Panel N81 (6m - 530cu.m)                                | 0       | 24-Dec-11 A | 16-Jan-12 A | D-wall Panel N81 (6m - 530cu.m)                                |    |    |    |          |    |    |    |       |    |    |    |       |    |    |    |
| 0521-1800                           | D-wall N59-N70 Pre-drilling (6 nos. remaining - 1 rig@6d/hole) | 36      | 19-Sep-11 A | 06-Mar-12   | D-wall N59-N70 Pre-drilling (6 nos. remaining - 1 rig@6d/hole) |    |    |    |          |    |    |    |       |    |    |    |       |    |    |    |
| 0521-1810                           | D-wall N59-N70 Grouting for Existing Seawall Rubble Mound      | 21      | 07-Mar-12   | 30-Mar-12   | D-wall N59-N70 Grouting for Existing Seawall Rubble Mound      |    |    |    |          |    |    |    |       |    |    |    |       |    |    |    |
| 0521-1820                           | D-wall N59-N70 Guide Wall                                      | 12      | 31-Mar-12   | 17-Apr-12   | D-wall N59-N70 Guide Wall                                      |    |    |    |          |    |    |    |       |    |    |    |       |    |    |    |
| 0521-1840                           | D-wall N52-N58 Pre-drilling (7 nos@3d - 2 rig)                 | 21      | 07-Mar-12   | 30-Mar-12   | D-wall N52-N58 Pre-drilling (7 nos@3d - 2 rig)                 |    |    |    |          |    |    |    |       |    |    |    |       |    |    |    |
| 0521-1850                           | D-wall N52-N58 Grouting for Existing Seawall Rubble Mound      | 21      | 31-Mar-12   | 27-Apr-12   | D-wall N52-N58 Grouting for Existing Seawall Rubble Mound      |    |    |    |          |    |    |    |       |    |    |    |       |    |    |    |
| 0521-1920                           | D-wall Temp Grouting for Existing Seawall Rubble Mound         | 18      | 23-Feb-12   | 14-Mar-12   | D-wall Temp Grouting for Existing Seawall Rubble Mound         |    |    |    |          |    |    |    |       |    |    |    |       |    |    |    |
| 0521-1930                           | D-wall Temp End-wall Guide Wall                                | 12      | 15-Mar-12   | 28-Mar-12   | D-wall Temp End-wall Guide Wall                                |    |    |    |          |    |    |    |       |    |    |    |       |    |    |    |
| 0521-1945.15                        | Slurry-wall TEW2 (Set 2)                                       | 4       | 29-Mar-12   | 02-Apr-12   | Slurry-wall TEW2 (Set 2)                                       |    |    |    |          |    |    |    |       |    |    |    |       |    |    |    |
| 0521-1945.25                        | Slurry-wall TEW4 (Set 2)                                       | 4       | 03-Apr-12   | 10-Apr-12   | Slurry-wall TEW4 (Set 2)                                       |    |    |    |          |    |    |    |       |    |    |    |       |    |    |    |
| 0521-1945.35                        | Slurry-wall TEW6 (Set 2)                                       | 4       | 11-Apr-12   | 14-Apr-12   | Slurry-wall TEW6 (Set 2)                                       |    |    |    |          |    |    |    |       |    |    |    |       |    |    |    |
| 0521-1960.10                        | Site Establishment - Haul Road / Access Road                   | 0       | 15-Nov-11 A | 27-Dec-11 A | Site Establishment - Haul Road / Access Road                   |    |    |    |          |    |    |    |       |    |    |    |       |    |    |    |
| 0521-1960.20                        | Site Establishment - Additional Bentonite Plant                | 8       | 03-Jan-12 A | 07-Feb-12   | Site Establishment - Additional Bentonite Plant                |    |    |    |          |    |    |    |       |    |    |    |       |    |    |    |
| 0521-1990                           | D-wall S102-S113 Guide Wall                                    | 12      | 10-Jan-12 A | 07-Feb-12   | D-wall S102-S113 Guide Wall                                    |    |    |    |          |    |    |    |       |    |    |    |       |    |    |    |

- Remaining Level of Effort
- Actual Level of Effort
- Actual Work
- Remaining Work
- Critical Remaining Work
- Milestone

Contract HY/2009/19

Three Month Rolling Programme (21 JAN 2012 - 20 APR 2012)

3MRP

3MRP - Jan 2012 to Apr 2012

Page 3 of 7



| Activity ID                                   | Activity Name   | Rem Dur | Start       | Finish      | 2012  |    |    |    |          |    |    |    |       |    |    |    |       |    |    |    |
|---|---|---------|-------------|-------------|---|----|----|----|----------|----|----|----|-------|----|----|----|-------|----|----|----|
|   |   |         |             |             | January   |    |    |    | February |    |    |    | March |    |    |    | April |    |    |    |
|   |   |         |             |             | 26  | 02 | 09 | 16 | 23       | 30 | 06 | 13 | 20    | 27 | 05 | 12 | 19    | 26 | 02 | 09 |
| 0530-3111                                     | Bay 9 - Sheet Piling Works                              | 12      | 15-Oct-11 A | 11-Feb-12   | Bay 9 - Sheet Piling Works                              |    |    |    |          |    |    |    |       |    |    |    |       |    |    |    |
| 0530-3113                                     | Bay 9 - Excavation                                      | 12      | 23-Feb-12   | 07-Mar-12   | Bay 9 - Excavation                                      |    |    |    |          |    |    |    |       |    |    |    |       |    |    |    |
| 0530-3114                                     | Bay 9 - Box Culvert/Outfall Construction                | 48      | 08-Mar-12   | 07-May-12   |   |    |    |    |          |    |    |    |       |    |    |    |       |    |    |    |
| 0530-3200                                     | Storm Drainage 1500 Dia. Within Portion X (FEHD)        | 60      | 21-Mar-12   | 02-Jun-12   |   |    |    |    |          |    |    |    |       |    |    |    |       |    |    |    |
| <b>10 - SECTION X OF THE WORKS</b>            |   |         |             |             |   |    |    |    |          |    |    |    |       |    |    |    |       |    |    |    |
| <b>10.1 - E/B Bridges (Bridge D, E and F)</b> |   |         |             |             |   |    |    |    |          |    |    |    |       |    |    |    |       |    |    |    |
| <b>10.1.1 - Marine Pier Construction</b>      |   |         |             |             |   |    |    |    |          |    |    |    |       |    |    |    |       |    |    |    |
| <b>Prep F02 to F15</b>                        |   |         |             |             |   |    |    |    |          |    |    |    |       |    |    |    |       |    |    |    |
| 1011-1420                                     | Extract Existing Dolphin Front Pile pier F9             | 0       | 26-Dec-11 A | 26-Dec-11 A | Extract Existing Dolphin Front Pile pier F9             |    |    |    |          |    |    |    |       |    |    |    |       |    |    |    |
| 1011-1425                                     | Remove Existing Dolphin pier F9                         | 0       | 31-Dec-11 A | 03-Jan-12 A | Remove Existing Dolphin pier F9                         |    |    |    |          |    |    |    |       |    |    |    |       |    |    |    |
| 1011-1430                                     | Extract Existing Dolphin Front Pile pier F10            | 0       | 29-Dec-11 A | 29-Dec-11 A | Extract Existing Dolphin Front Pile pier F10            |    |    |    |          |    |    |    |       |    |    |    |       |    |    |    |
| 1011-1435                                     | Remove Existing Dolphin pier F10                        | 0       | 31-Dec-11 A | 03-Jan-12 A | Remove Existing Dolphin pier F10                        |    |    |    |          |    |    |    |       |    |    |    |       |    |    |    |
| 1011-1570.30                                  | F7 piling platform - temporary piles 5 & 6              | 0       | 16-Dec-11 A | 29-Dec-11 A | F7 piling platform - temporary piles 5 & 6              |    |    |    |          |    |    |    |       |    |    |    |       |    |    |    |
| 1011-1570.40                                  | F7 piling platform - erect steel platform modules 3 & 4 | 0       | 27-Dec-11 A | 07-Jan-12 A | F7 piling platform - erect steel platform modules 3 & 4 |    |    |    |          |    |    |    |       |    |    |    |       |    |    |    |
| 1011-1570.50                                  | F7 piling platform - ICE                                | 0       | 04-Jan-12 A | 18-Jan-12 A | F7 piling platform - ICE                                |    |    |    |          |    |    |    |       |    |    |    |       |    |    |    |
| 1011-1580.20                                  | F8 piling platform - erect steel platform modules 1 & 2 | 0       | 16-Nov-11 A | 26-Dec-11 A | F8 piling platform - erect steel platform modules 1 & 2 |    |    |    |          |    |    |    |       |    |    |    |       |    |    |    |
| 1011-1580.30                                  | F8 piling platform - temporary piles 5 & 6              | 0       | 27-Dec-11 A | 03-Jan-12 A | F8 piling platform - temporary piles 5 & 6              |    |    |    |          |    |    |    |       |    |    |    |       |    |    |    |
| 1011-1580.40                                  | F8 piling platform - erect steel platform modules 3 & 4 | 0       | 04-Jan-12 A | 11-Jan-12 A | F8 piling platform - erect steel platform modules 3 & 4 |    |    |    |          |    |    |    |       |    |    |    |       |    |    |    |
| 1011-1580.50                                  | F8 piling platform - ICE                                | 0       | 12-Jan-12 A | 16-Jan-12 A | F8 piling platform - ICE                                |    |    |    |          |    |    |    |       |    |    |    |       |    |    |    |
| 1011-1590                                     | Erect marine piling platform pier F9                    | 32      | 10-Jan-12 A | 02-Mar-12   | Erect marine piling platform pier F9                    |    |    |    |          |    |    |    |       |    |    |    |       |    |    |    |
| 1011-1600                                     | Erect marine piling platform pier F10                   | 32      | 10-Jan-12 A | 02-Mar-12   | Erect marine piling platform pier F10                   |    |    |    |          |    |    |    |       |    |    |    |       |    |    |    |
| 1011-1610                                     | Erect marine piling platform pier F11                   | 18      | 20-Oct-11 A | 15-Feb-12   | Erect marine piling platform pier F11                   |    |    |    |          |    |    |    |       |    |    |    |       |    |    |    |
| 1011-1620                                     | Erect marine piling platform pier F12                   | 18      | 26-Oct-11 A | 14-Feb-12   | Erect marine piling platform pier F12                   |    |    |    |          |    |    |    |       |    |    |    |       |    |    |    |
| 1011-1630                                     | Erect marine piling platform pier F13                   | 18      | 01-Nov-11 A | 20-Apr-12   | Erect marine piling platform pier F13                   |    |    |    |          |    |    |    |       |    |    |    |       |    |    |    |
| 1011-1640                                     | Erect marine piling platform pier F14                   | 18      | 08-Nov-11 A | 09-May-12   | Erect marine piling platform pier F14                   |    |    |    |          |    |    |    |       |    |    |    |       |    |    |    |
| 1011-1670                                     | Pre-drill F7 raking dolphin piles (2 nos.)              | 3       | 03-Dec-11 A | 27-Jan-12   | Pre-drill F7 raking dolphin piles (2 nos.)              |    |    |    |          |    |    |    |       |    |    |    |       |    |    |    |
| 1011-1680                                     | Pre-drill F8 raking dolphin piles (2 nos.)              | 5       | 05-Jan-12 A | 02-Feb-12   | Pre-drill F8 raking dolphin piles (2 nos.)              |    |    |    |          |    |    |    |       |    |    |    |       |    |    |    |
| 1011-1690                                     | Pre-drill F9 raking dolphin piles (2 nos.)              | 10      | 02-Mar-12   | 14-Mar-12   | Pre-drill F9 raking dolphin piles (2 nos.)              |    |    |    |          |    |    |    |       |    |    |    |       |    |    |    |
| 1011-1700                                     | Pre-drill F10 raking dolphin piles (2 nos.)             | 10      | 14-Mar-12   | 26-Mar-12   | Pre-drill F10 raking dolphin piles (2 nos.)             |    |    |    |          |    |    |    |       |    |    |    |       |    |    |    |
| 1011-1710                                     | Pre-drill F11 raking dolphin piles (2 nos.)             | 10      | 16-Feb-12   | 27-Feb-12   | Pre-drill F11 raking dolphin piles (2 nos.)             |    |    |    |          |    |    |    |       |    |    |    |       |    |    |    |
| 1011-1720                                     | Pre-drill F12 raking dolphin piles (2 nos.)             | 10      | 28-Feb-12   | 09-Mar-12   | Pre-drill F12 raking dolphin piles (2 nos.)             |    |    |    |          |    |    |    |       |    |    |    |       |    |    |    |
| 1011-1760.20                                  | Pier F3 Marine Bore Pile - F3-4                         | 0       | 24-Dec-11 A | 17-Jan-12 A | Pier F3 Marine Bore Pile - F3-4                         |    |    |    |          |    |    |    |       |    |    |    |       |    |    |    |
| 1011-1760.30                                  | Pier F3 Marine Bore Pile - F3-7                         | 12      | 21-Jan-12   | 07-Feb-12   | Pier F3 Marine Bore Pile - F3-7                         |    |    |    |          |    |    |    |       |    |    |    |       |    |    |    |
| 1011-1760.40                                  | Pier F3 Marine Bore Pile - F3-3                         | 12      | 08-Feb-12   | 21-Feb-12   | Pier F3 Marine Bore Pile - F3-3                         |    |    |    |          |    |    |    |       |    |    |    |       |    |    |    |
| 1011-1760.50                                  | Pier F3 Marine Bore Pile - F3-6                         | 12      | 22-Feb-12   | 06-Mar-12   | Pier F3 Marine Bore Pile - F3-6                         |    |    |    |          |    |    |    |       |    |    |    |       |    |    |    |
| 1011-1760.60                                  | Pier F3 Marine Bore Pile - F3-2                         | 12      | 07-Mar-12   | 20-Mar-12   | Pier F3 Marine Bore Pile - F3-2                         |    |    |    |          |    |    |    |       |    |    |    |       |    |    |    |
| 1011-1760.70                                  | Pier F3 Marine Bore Pile - F3-5                         | 12      | 21-Mar-12   | 03-Apr-12   | Pier F3 Marine Bore Pile - F3-5                         |    |    |    |          |    |    |    |       |    |    |    |       |    |    |    |
| 1011-1760.80                                  | Pier F3 Marine Bore Pile - F3-1                         | 12      | 05-Apr-12   | 20-Apr-12   | Pier F3 Marine Bore Pile - F3-1                         |    |    |    |          |    |    |    |       |    |    |    |       |    |    |    |
| 1011-1790                                     | Pier F6 Dolphin Pile (team 4)                           | 72      | 16-Mar-12   | 13-Jun-12   | Pier F6 Dolphin Pile (team 4)                           |    |    |    |          |    |    |    |       |    |    |    |       |    |    |    |
| 1011-1800.10                                  | Pier F6 Marine Bore Pile - F6-2                         | 10      | 15-Dec-11 A | 04-Feb-12   | Pier F6 Marine Bore Pile - F6-2                         |    |    |    |          |    |    |    |       |    |    |    |       |    |    |    |
| 1011-1800.20                                  | Pier F6 Marine Bore Pile - F6-3                         | 11      | 07-Jan-12 A | 17-Feb-12   | Pier F6 Marine Bore Pile - F6-3                         |    |    |    |          |    |    |    |       |    |    |    |       |    |    |    |
| 1011-1800.30                                  | Pier F6 Marine Bore Pile - F6-1                         | 12      | 17-Feb-12   | 02-Mar-12   | Pier F6 Marine Bore Pile - F6-1                         |    |    |    |          |    |    |    |       |    |    |    |       |    |    |    |
| 1011-1800.40                                  | Pier F6 Marine Bore Pile - F6-4                         | 12      | 02-Mar-12   | 16-Mar-12   | Pier F6 Marine Bore Pile - F6-4                         |    |    |    |          |    |    |    |       |    |    |    |       |    |    |    |
| 1011-1802                                     | Pier F9 Dolphin Pile (team 4)                           | 72      | 16-Mar-12   | 13-Jun-12   | Pier F9 Dolphin Pile (team 4)                           |    |    |    |          |    |    |    |       |    |    |    |       |    |    |    |

|  |                           |
|--|---------------------------|
|  | Remaining Level of Effort |
|  | Actual Level of Effort    |
|  | Actual Work               |
|  | Remaining Work            |
|  | Critical Remaining Work   |
|  | Milestone                 |

**Contract HY/2009/19**  
**Three Month Rolling Programme (21 JAN 2012 - 20 APR 2012)**

3MRP  
3MRP - Jan 2012 to Apr 2012  
Page 5 of 7

| Activity ID                            | Activity Name  | Rem Dur | Start       | Finish      | 2012   |    |    |    |    |         |    |    |    |    |          |    |    |    |    |       |    |  |       |  |  |
|--|--|---------|-------------|-------------|--|----|----|----|----|---------|----|----|----|----|----------|----|----|----|----|-------|----|--|-------|--|--|
|  |  |         |             |             | 2011   |    |    |    |    | January |    |    |    |    | February |    |    |    |    | March |    |  | April |  |  |
|  |  |         |             |             | 26   | 02 | 09 | 16 | 23 | 30      | 06 | 13 | 20 | 27 | 05       | 12 | 19 | 26 | 02 | 09    | 16 |  |       |  |  |
| 1011-1810                              | Pier F5 Dolphin Pile (team 3)                              | 72      | 29-Feb-12   | 26-May-12   |  |    |    |    |    |         |    |    |    |    |          |    |    |    |    |       |    |  |       |  |  |
| 1011-1820.10                           | Pier F5 Marine Bore Pile - F5-4                            | 0       | 09-Dec-11 A | 07-Jan-12 A | Pier F5 Marine Bore Pile - F5-4              |    |    |    |    |         |    |    |    |    |          |    |    |    |    |       |    |  |       |  |  |
| 1011-1820.20                           | Pier F5 Marine Bore Pile - F5-2                            | 6       | 13-Jan-12 A | 31-Jan-12   | Pier F5 Marine Bore Pile - F5-2              |    |    |    |    |         |    |    |    |    |          |    |    |    |    |       |    |  |       |  |  |
| 1011-1820.30                           | Pier F5 Marine Bore Pile - F5-1                            | 12      | 01-Feb-12   | 14-Feb-12   | Pier F5 Marine Bore Pile - F5-1              |    |    |    |    |         |    |    |    |    |          |    |    |    |    |       |    |  |       |  |  |
| 1011-1820.40                           | Pier F5 Marine Bore Pile - F5-3                            | 12      | 15-Feb-12   | 28-Feb-12   | Pier F5 Marine Bore Pile - F5-3              |    |    |    |    |         |    |    |    |    |          |    |    |    |    |       |    |  |       |  |  |
| 1011-1822                              | Pier F12 Dolphin Pile (team 3)                             | 72      | 10-Mar-12   | 06-Jun-12   |  |    |    |    |    |         |    |    |    |    |          |    |    |    |    |       |    |  |       |  |  |
| 1011-1850                              | Pier F4 Dolphin Pile (team 2)                              | 36      | 21-Mar-12   | 05-May-12   |  |    |    |    |    |         |    |    |    |    |          |    |    |    |    |       |    |  |       |  |  |
| 1011-1860.20                           | Pier F4 Marine Bore Pile - F4-6                            | 0       | 19-Dec-11 A | 14-Jan-12 A | Pier F4 Marine Bore Pile - F4-6              |    |    |    |    |         |    |    |    |    |          |    |    |    |    |       |    |  |       |  |  |
| 1011-1860.30                           | Pier F4 Marine Bore Pile - F4-5                            | 12      | 21-Jan-12   | 07-Feb-12   | Pier F4 Marine Bore Pile - F4-5              |    |    |    |    |         |    |    |    |    |          |    |    |    |    |       |    |  |       |  |  |
| 1011-1860.40                           | Pier F4 Marine Bore Pile - F4-2                            | 12      | 08-Feb-12   | 21-Feb-12   | Pier F4 Marine Bore Pile - F4-2              |    |    |    |    |         |    |    |    |    |          |    |    |    |    |       |    |  |       |  |  |
| 1011-1860.50                           | Pier F4 Marine Bore Pile - F4-4                            | 12      | 22-Feb-12   | 06-Mar-12   | Pier F4 Marine Bore Pile - F4-4              |    |    |    |    |         |    |    |    |    |          |    |    |    |    |       |    |  |       |  |  |
| 1011-1860.60                           | Pier F4 Marine Bore Pile - F4-1                            | 12      | 07-Mar-12   | 20-Mar-12   | Pier F4 Marine Bore Pile - F4-1              |    |    |    |    |         |    |    |    |    |          |    |    |    |    |       |    |  |       |  |  |
| 1011-1864.10                           | Pier F8 Marine Bored Pile F8-4                             | 8       | 16-Jan-12 A | 03-Feb-12   | Pier F8 Marine Bored Pile F8-4               |    |    |    |    |         |    |    |    |    |          |    |    |    |    |       |    |  |       |  |  |
| 1011-1864.20                           | Pier F8 Marine Bored Pile F8-2                             | 12      | 03-Feb-12   | 17-Feb-12   | Pier F8 Marine Bored Pile F8-2               |    |    |    |    |         |    |    |    |    |          |    |    |    |    |       |    |  |       |  |  |
| 1011-1864.30                           | Pier F8 Marine Bored Pile F8-3                             | 12      | 17-Feb-12   | 02-Mar-12   | Pier F8 Marine Bored Pile F8-3               |    |    |    |    |         |    |    |    |    |          |    |    |    |    |       |    |  |       |  |  |
| 1011-1864.40                           | Pier F8 Marine Bored Pile F8-1                             | 12      | 02-Mar-12   | 16-Mar-12   | Pier F8 Marine Bored Pile F8-1               |    |    |    |    |         |    |    |    |    |          |    |    |    |    |       |    |  |       |  |  |
| 1011-1910                              | Pier F7 Dolphin Pile (team 5)                              | 72      | 19-Mar-12   | 15-Jun-12   |  |    |    |    |    |         |    |    |    |    |          |    |    |    |    |       |    |  |       |  |  |
| 1011-1920.10                           | Pier F7 Marine Bored Pile F7-4                             | 11      | 19-Jan-12 A | 06-Feb-12   | Pier F7 Marine Bored Pile F7-4               |    |    |    |    |         |    |    |    |    |          |    |    |    |    |       |    |  |       |  |  |
| 1011-1920.20                           | Pier F7 Marine Bored Pile F7-2                             | 12      | 06-Feb-12   | 20-Feb-12   | Pier F7 Marine Bored Pile F7-2               |    |    |    |    |         |    |    |    |    |          |    |    |    |    |       |    |  |       |  |  |
| 1011-1920.30                           | Pier F7 Marine Bored Pile F7-3                             | 12      | 20-Feb-12   | 05-Mar-12   | Pier F7 Marine Bored Pile F7-3               |    |    |    |    |         |    |    |    |    |          |    |    |    |    |       |    |  |       |  |  |
| 1011-1920.40                           | Pier F7 Marine Bored Pile F7-1                             | 12      | 05-Mar-12   | 19-Mar-12   | Pier F7 Marine Bored Pile F7-1               |    |    |    |    |         |    |    |    |    |          |    |    |    |    |       |    |  |       |  |  |
| 1011-2010                              | Dismantle Piling Platform at Pier F5                       | 6       | 21-Mar-12   | 27-Mar-12   | Dismantle Piling Platform at Pier F5         |    |    |    |    |         |    |    |    |    |          |    |    |    |    |       |    |  |       |  |  |
| 1011-2020                              | Dismantle Piling Platform at Pier F6                       | 6       | 10-Apr-12   | 17-Apr-12   | Dismantle Piling Platform at Pier F6         |    |    |    |    |         |    |    |    |    |          |    |    |    |    |       |    |  |       |  |  |
| 1011-2100                              | Marine bored pile testing F5                               | 18      | 29-Feb-12   | 20-Mar-12   | Marine bored pile testing F5                 |    |    |    |    |         |    |    |    |    |          |    |    |    |    |       |    |  |       |  |  |
| 1011-2105                              | Marine bored pile testing F6                               | 18      | 16-Mar-12   | 10-Apr-12   | Marine bored pile testing F6                 |    |    |    |    |         |    |    |    |    |          |    |    |    |    |       |    |  |       |  |  |
| <b>Pier F01 to F02</b>                 |  |         |             |             |  |    |    |    |    |         |    |    |    |    |          |    |    |    |    |       |    |  |       |  |  |
| 1011-2540                              | Possession to Portion III                                  | 0       | 31-Dec-11 A |             | ◆ Possession to Portion III                  |    |    |    |    |         |    |    |    |    |          |    |    |    |    |       |    |  |       |  |  |
| 1011-2550                              | Marine piling preparation works, portion III               | 0       | 31-Dec-11 A | 06-Jan-12 A | Marine piling preparation works, portion III |    |    |    |    |         |    |    |    |    |          |    |    |    |    |       |    |  |       |  |  |
| 1011-2560                              | Erect Piling Platform pier F2B                             | 7       | 09-Jan-12 A | 01-Feb-12   | Erect Piling Platform pier F2B               |    |    |    |    |         |    |    |    |    |          |    |    |    |    |       |    |  |       |  |  |
| 1011-2570                              | Erect Pre-drilling Platform pier F2A                       | 9       | 11-Feb-12   | 22-Feb-12   | Erect Pre-drilling Platform pier F2A         |    |    |    |    |         |    |    |    |    |          |    |    |    |    |       |    |  |       |  |  |
| 1011-2580                              | Erect Pre-drilling Platform pier F1B                       | 9       | 01-Feb-12   | 11-Feb-12   | Erect Pre-drilling Platform pier F1B         |    |    |    |    |         |    |    |    |    |          |    |    |    |    |       |    |  |       |  |  |
| 1011-2590                              | Erect Pre-drilling Platform pier F1A                       | 9       | 22-Feb-12   | 03-Mar-12   | Erect Pre-drilling Platform pier F1A         |    |    |    |    |         |    |    |    |    |          |    |    |    |    |       |    |  |       |  |  |
| 1011-2600                              | Pre-drilling pier F2B                                      | 10      | 22-Feb-12   | 05-Mar-12   | Pre-drilling pier F2B                        |    |    |    |    |         |    |    |    |    |          |    |    |    |    |       |    |  |       |  |  |
| 1011-2610                              | Pre-drilling pier F2A                                      | 15      | 22-Feb-12   | 10-Mar-12   | Pre-drilling pier F2A                        |    |    |    |    |         |    |    |    |    |          |    |    |    |    |       |    |  |       |  |  |
| 1011-2620                              | Pre-drilling pier F1B                                      | 10      | 05-Mar-12   | 16-Mar-12   | Pre-drilling pier F1B                        |    |    |    |    |         |    |    |    |    |          |    |    |    |    |       |    |  |       |  |  |
| 1011-2630                              | Pre-drilling pier F1A                                      | 15      | 05-Mar-12   | 22-Mar-12   | Pre-drilling pier F1A                        |    |    |    |    |         |    |    |    |    |          |    |    |    |    |       |    |  |       |  |  |
| 1011-2635                              | Portion III Marine Pile G.I. Final Report / Founding Level | 30      | 22-Mar-12   | 30-Apr-12   |  |    |    |    |    |         |    |    |    |    |          |    |    |    |    |       |    |  |       |  |  |
| 1011-2680                              | Remove existing dolphin pier F2                            | 0       | 31-Dec-11 A | 03-Jan-12 A | Remove existing dolphin pier F2              |    |    |    |    |         |    |    |    |    |          |    |    |    |    |       |    |  |       |  |  |
| 1011-2690                              | Remove existing dolphin pier F1                            | 0       | 31-Dec-11 A | 03-Jan-12 A | Remove existing dolphin pier F1              |    |    |    |    |         |    |    |    |    |          |    |    |    |    |       |    |  |       |  |  |
| 1011-2770                              | Marine bored pile F2B                                      | 48      | 29-Mar-12   | 29-May-12   |  |    |    |    |    |         |    |    |    |    |          |    |    |    |    |       |    |  |       |  |  |
| 1011-2780                              | Marine bored pile F1B                                      | 48      | 29-Mar-12   | 29-May-12   |  |    |    |    |    |         |    |    |    |    |          |    |    |    |    |       |    |  |       |  |  |
| <b>10.1.2 - Land Pier Construction</b> |  |         |             |             |  |    |    |    |    |         |    |    |    |    |          |    |    |    |    |       |    |  |       |  |  |
| <b>Pier D08 to D11</b>                 |  |         |             |             |  |    |    |    |    |         |    |    |    |    |          |    |    |    |    |       |    |  |       |  |  |
| 1012-1010                              | Site Survey and Setting Out at Portion III                 | 0       | 31-Dec-11 A | 06-Jan-12 A | Site Survey and Setting Out at Portion III   |    |    |    |    |         |    |    |    |    |          |    |    |    |    |       |    |  |       |  |  |

Remaining Level of Effort  
 Actual Level of Effort  
 Actual Work  
 Remaining Work  
 Critical Remaining Work  
 Milestone

**Contract HY/2009/19**  
**Three Month Rolling Programme (21 JAN 2012 - 20 APR 2012)**

3MRP  
 3MRP - Jan 2012 to Apr 2012  
 Page 6 of 7

| Activity ID                             | Activity Name   | Rem Dur | Start       | Finish      | 2012  |    |    |    |          |    |    |    |       |    |    |    |       |    |    |    |
|---|---|---------|-------------|-------------|---|----|----|----|----------|----|----|----|-------|----|----|----|-------|----|----|----|
|   |   |         |             |             | January   |    |    |    | February |    |    |    | March |    |    |    | April |    |    |    |
|   |   |         |             |             | 26  | 02 | 09 | 16 | 23       | 30 | 06 | 13 | 20    | 27 | 05 | 12 | 19    | 26 | 02 | 09 |
| 1012-1015                               | Pre-drilling for Piling (D08 to D12) at III (28 no.) (4set) | 16      | 03-Jan-12 A | 13-Feb-12   | Pre-drilling for Piling (D08 to D12) at III (28 no.) (4set) |    |    |    |          |    |    |    |       |    |    |    |       |    |    |    |
| 1012-1020                               | Portion III Land Pile G.I. Prelim Report / Founding Level   | 6       | 13-Feb-12   | 20-Feb-12   | Portion III Land Pile G.I. Prelim Report / Founding Level   |    |    |    |          |    |    |    |       |    |    |    |       |    |    |    |
| 1012-1025                               | Portion III Land Pile G.I. Final Report / Founding Level    | 24      | 20-Feb-12   | 19-Mar-12   | Portion III Land Pile G.I. Final Report / Founding Level    |    |    |    |          |    |    |    |       |    |    |    |       |    |    |    |
| 1012-1030.10                            | Pier D08 Bored Pile D8-1                                    | 12      | 13-Feb-12   | 27-Feb-12   | Pier D08 Bored Pile D8-1                                    |    |    |    |          |    |    |    |       |    |    |    |       |    |    |    |
| 1012-1030.20                            | Pier D08 Bored Pile D8-6                                    | 12      | 27-Feb-12   | 12-Mar-12   | Pier D08 Bored Pile D8-6                                    |    |    |    |          |    |    |    |       |    |    |    |       |    |    |    |
| 1012-1030.30                            | Pier D08 Bored Pile D8-2                                    | 12      | 12-Mar-12   | 26-Mar-12   | Pier D08 Bored Pile D8-2                                    |    |    |    |          |    |    |    |       |    |    |    |       |    |    |    |
| 1012-1030.40                            | Pier D08 Bored Pile D8-5                                    | 12      | 26-Mar-12   | 12-Apr-12   | Pier D08 Bored Pile D8-5                                    |    |    |    |          |    |    |    |       |    |    |    |       |    |    |    |
| 1012-1030.50                            | Pier D08 Bored Pile D8-3                                    | 12      | 12-Apr-12   | 26-Apr-12   | Pier D08 Bored Pile D8-3                                    |    |    |    |          |    |    |    |       |    |    |    |       |    |    |    |
| 1012-1040.10                            | Pier D09 Bored Pile D9-1                                    | 12      | 13-Feb-12   | 27-Feb-12   | Pier D09 Bored Pile D9-1                                    |    |    |    |          |    |    |    |       |    |    |    |       |    |    |    |
| 1012-1040.20                            | Pier D09 Bored Pile D9-6                                    | 12      | 27-Feb-12   | 12-Mar-12   | Pier D09 Bored Pile D9-6                                    |    |    |    |          |    |    |    |       |    |    |    |       |    |    |    |
| 1012-1040.30                            | Pier D09 Bored Pile D9-2                                    | 12      | 12-Mar-12   | 26-Mar-12   | Pier D09 Bored Pile D9-2                                    |    |    |    |          |    |    |    |       |    |    |    |       |    |    |    |
| 1012-1040.40                            | Pier D09 Bored Pile D9-5                                    | 12      | 26-Mar-12   | 12-Apr-12   | Pier D09 Bored Pile D9-5                                    |    |    |    |          |    |    |    |       |    |    |    |       |    |    |    |
| 1012-1040.50                            | Pier D09 Bored Pile D9-3                                    | 12      | 12-Apr-12   | 26-Apr-12   | Pier D09 Bored Pile D9-3                                    |    |    |    |          |    |    |    |       |    |    |    |       |    |    |    |
| 1012-1050.10                            | Pier D10 Bored Pile D10-1                                   | 12      | 20-Feb-12   | 05-Mar-12   | Pier D10 Bored Pile D10-1                                   |    |    |    |          |    |    |    |       |    |    |    |       |    |    |    |
| 1012-1050.20                            | Pier D10 Bored Pile D10-6                                   | 12      | 05-Mar-12   | 19-Mar-12   | Pier D10 Bored Pile D10-6                                   |    |    |    |          |    |    |    |       |    |    |    |       |    |    |    |
| 1012-1050.30                            | Pier D10 Bored Pile D10-2                                   | 12      | 19-Mar-12   | 02-Apr-12   | Pier D10 Bored Pile D10-2                                   |    |    |    |          |    |    |    |       |    |    |    |       |    |    |    |
| 1012-1050.40                            | Pier D10 Bored Pile D10-5                                   | 12      | 02-Apr-12   | 19-Apr-12   | Pier D10 Bored Pile D10-5                                   |    |    |    |          |    |    |    |       |    |    |    |       |    |    |    |
| 1012-1060.10                            | Pier D11 Bored Pile D11-1                                   | 12      | 05-Mar-12   | 19-Mar-12   | Pier D11 Bored Pile D11-1                                   |    |    |    |          |    |    |    |       |    |    |    |       |    |    |    |
| 1012-1060.20                            | Pier D11 Bored Pile D11-6                                   | 12      | 19-Mar-12   | 02-Apr-12   | Pier D11 Bored Pile D11-6                                   |    |    |    |          |    |    |    |       |    |    |    |       |    |    |    |
| 1012-1060.30                            | Pier D11 Bored Pile D11-2                                   | 12      | 02-Apr-12   | 19-Apr-12   | Pier D11 Bored Pile D11-2                                   |    |    |    |          |    |    |    |       |    |    |    |       |    |    |    |
| <b>Pier D05 to D07</b>                  |   |         |             |             |   |    |    |    |          |    |    |    |       |    |    |    |       |    |    |    |
| 1012-1260                               | Pre-drilling for 18 nos Piling at VIIB ( 2set)              | 11      | 08-Aug-11 A | 06-Feb-12   | Pre-drilling for 18 nos Piling at VIIB ( 2set)              |    |    |    |          |    |    |    |       |    |    |    |       |    |    |    |
| 1012-1265                               | Portion VIIB Land Pile G.I. Final Report / Founding Level   | 15      | 03-Oct-11 A | 23-Feb-12   | Portion VIIB Land Pile G.I. Final Report / Founding Level   |    |    |    |          |    |    |    |       |    |    |    |       |    |    |    |
| 1012-1270                               | Pier D07 Bored Piles (6 piles)                              | 108     | 23-Feb-12   | 05-Jul-12   | Pier D07 Bored Piles (6 piles)                              |    |    |    |          |    |    |    |       |    |    |    |       |    |    |    |
| 1012-1280.50                            | Pier D06 Bored Pile D06-4                                   | 8       | 03-Jan-12 A | 02-Feb-12   | Pier D06 Bored Pile D06-4                                   |    |    |    |          |    |    |    |       |    |    |    |       |    |    |    |
| 1012-1280.60                            | Pier D06 Bored Pile D06-3                                   | 0       | 21-Dec-11 A | 18-Jan-12 A | Pier D06 Bored Pile D06-3                                   |    |    |    |          |    |    |    |       |    |    |    |       |    |    |    |
| 1012-1290.20                            | Pier D05 Bored Pile D05-1                                   | 13      | 02-Dec-11 A | 19-Apr-12   | Pier D05 Bored Pile D05-1                                   |    |    |    |          |    |    |    |       |    |    |    |       |    |    |    |
| <b>10.1.3 - E/B Bridge Construction</b> |   |         |             |             |   |    |    |    |          |    |    |    |       |    |    |    |       |    |    |    |
| <b>Bridge D3</b>                        |   |         |             |             |   |    |    |    |          |    |    |    |       |    |    |    |       |    |    |    |
| 1013-1000                               | Design & Procurement of Launching Girder                    | 75      | 21-Jan-12   | 24-Apr-12   | Design & Procurement of Launching Girder                    |    |    |    |          |    |    |    |       |    |    |    |       |    |    |    |
| <b>14 - SECTION 14 OF THE WORKS</b>     |   |         |             |             |   |    |    |    |          |    |    |    |       |    |    |    |       |    |    |    |
| <b>14.1 - Soft Landscape</b>            |   |         |             |             |   |    |    |    |          |    |    |    |       |    |    |    |       |    |    |    |
| 1410-1000                               | Transplant. of ex. Trees to Nursery & upkeep                | 1515    | 21-Jan-12   | 09-Feb-17   | Transplant. of ex. Trees to Nursery & upkeep                |    |    |    |          |    |    |    |       |    |    |    |       |    |    |    |

- ▬ Remaining Level of Effort
- ▬ Actual Level of Effort
- ▬ Actual Work
- ▬ Remaining Work
- ▬ Critical Remaining Work
- ◆ Milestone

Contract HY/2009/19

Three Month Rolling Programme (21 JAN 2012 - 20 APR 2012)

3MRP

3MRP - Jan 2012 to Apr 2012

Page 7 of 7